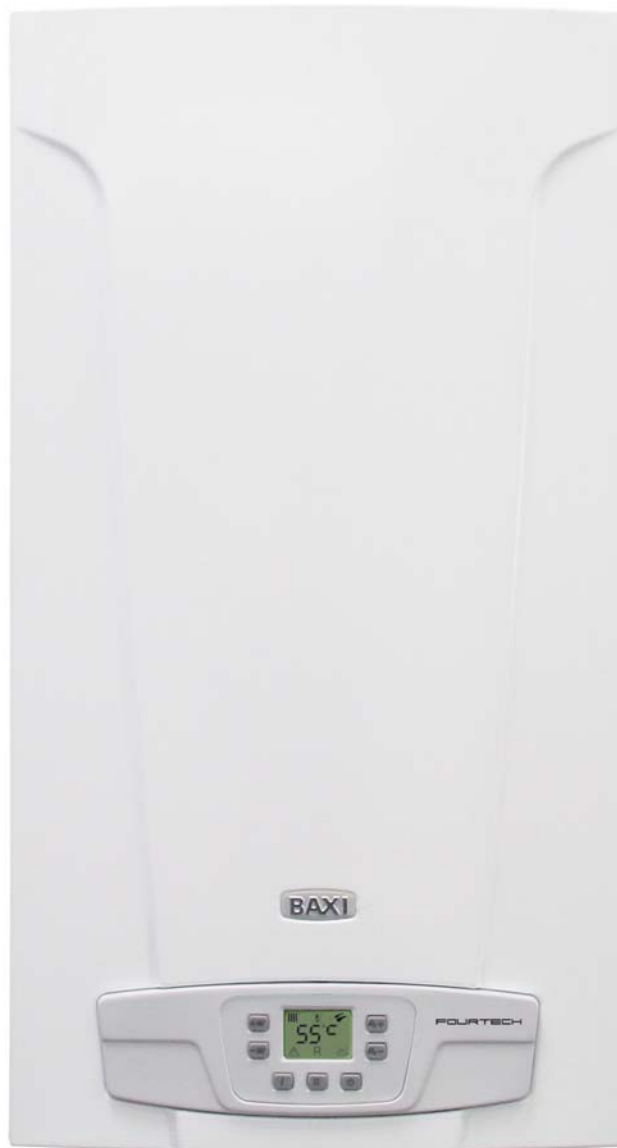


BAXI



FOURTECH

SPARE PARTS CATALOGUE

- November 2010 -

HOW TO READ THE SPARE PARTS CATALOGUE

In the spare part catalogue, after the exploded diagrams, there are the components lists of the boilers; this is the meaning of the different columns:

| | |
|--------------------|--|
| Pos. | Identification number of the component in the exploded diagram of the boiler. |
| Description | Short description of the component. |
| Code | BAXI S.p.A. code of the component. |
| Tab. XX | XX is the exploded diagram number of the boiler taken into consideration. |
| From serial number | Date (year and week) identifying the beginning of production of a component (taken from the serial number of the boiler). e.g. B005: year 2000 (B identifies the decade 2000-2009; 0 identifies the year) – 5th week. If the box is empty, the component is in use from the beginning of production of the boiler. |
| To serial number | Date (year and week) identifying the end of production of a component (taken from the serial number of the boiler). e.g. B012: year 2000 (B identifies the decade 2000-2009; 0 identifies the year) – 12th week. If the box is empty, the component is still in use. |
| Interchangeable | It identifies the interchangeability between the new component and the old one. YES: components are interchangeable. NO: components are not interchangeable. |

BOILERS CONNECTION BOARD - EXPLODED VIEW

TABELLA COLLEGAMENTO CODICE CALDAIA - ESPLOSO

TABLERO UNIÓN CALDERA - EXPLOSIONADO

TABLEAU CONNECTION CODEX CHAUDIERE - VUE ECLATEE

| BOILER CODE | BOILER DESCRIPTION | EXPLODED REF. |
|-----------------------|------------------------------|--------------------------|
| CODICE CALDAIA | DESCRIZIONE CALDAIA | RIF. ESPLOSO |
| CODIGO CALDERA | DESCRIPCION CALDERA | REF. EXPLOSIONADO |
| CODE CHAUDIERE | DESCRIPTION CHAUDIERE | RÉF. EXPLOSÉE |
| CSB461143680 | FOURTECH 1.14 -BAXI- | Tab 375 |
| CSB461243680 | FOURTECH 1.24 -BAXI- | Tab 375 |
| CSB462243680/1 | FOURTECH 24 -BAXI- | Tab 366 |
| CSB465143680 | FOURTECH 1.14 F -BAXI- | Tab 376 |
| CSB465243680 | FOURTECH 1.24 F -BAXI- | Tab 376 |
| CSB466243680/1 | FOURTECH 24 F -BAXI- | Tab 365 |

FOURTECH

| Pos | Code | Description code | CSB461143680 1.14 | CSB461243680 1.24 | CSB462243680/1 24 | CSB465143680 1.14 F | CSB465243680 1.24 F | CSB46243680/1 24 F | To serial number | From serial number | Interchan geable: |
|-----|---------|--------------------------------|----------------------|----------------------|----------------------|------------------------|------------------------|-----------------------|------------------------|--------------------------|----------------------|
| 2 | 5698660 | LEFT PANEL ASSEMBLY ECO4 ATM. | • | • | • | | | | | | |
| 2 | 5698680 | LEFT PANEL ASSEMBLY ECO4 FF | | | | • | • | • | | | |
| 3 | 5698650 | RIGHT PANEL ASSEMBLY ECO4 ATM. | • | • | • | | | | | | |
| 3 | 5698670 | RIGHT PANEL ASSEMBLY ECO4 FF | | | | • | • | • | | | |
| 4 | 628820 | FRONTAL PANEL ASS. ECO4 ATM | • | • | • | • | • | • | | | |
| 5 | 5117420 | TRAVERSE SIDES CONNECTION FF | | | | • | • | • | | | |
| 5 | 5117460 | TRAVERSE SIDES CONNECTION-ATM- | • | • | • | | | | | | |
| 8 | 5408080 | PRESSURE SWITCH PIPE L=270 | | | | • | • | • | | | |
| 9 | 5117740 | FLUE REDUCTION d.78mm | | | | • | • | • | | | |
| 12 | 5108690 | PLATE BLANKING | | | | • | • | • | | | |
| 13 | 5407400 | SUCTION CAP GASKET | | | | • | • | • | | | |
| 17 | 5214290 | BEND FLUE EMISSIONS ECO4 | | | | • | • | • | | | |
| 18 | 5409580 | PRESSURE SENSING VENTURI 80E | | | | • | | | | | |
| 18 | 5413850 | PRESS.SENS.VENTURI SINGLE TAP | | | | | • | • | | | |
| 21 | 5402050 | WASHER-SEALING | • | • | • | • | • | • | | | |
| 22 | 5678500 | FAN 31W | | | | • | | | | | |
| 22 | 5682150 | FAN | | | | | • | • | | | |
| 23 | 628770 | FLUE PRESS.SWITCH 70-60Pa HUBA | | | | | • | • | | | |
| 23 | 628800 | FLUE PRESS.SWITCH 50-39Pa HUBA | | | | • | | | | | |
| 23 | 5640000 | PRESSURE SWITCH | | | | • | | | | | |
| 23 | 5663820 | PRESSURE SWITCH 80 | | | | | • | • | | | |
| 24 | 5407930 | PIPE - VALVE COMPENSATION | | | | • | • | • | B923 | | |
| 24 | 5414320 | PIPE-VALVE COMPENS.4,5x8 L=170 | | | | • | • | • | | B924 | YES |
| 25 | 5113800 | CONVEYOR ASSEMBLY | | | | • | • | • | | | |
| 27 | 5698630 | COMBUST. CHAMBER ASS. ECO4 ATM | | • | • | | | | | | |
| 27 | 5698640 | COMBUST. CHAMBER ASS. ECO4 FF | | | | • | • | • | | | |
| 27 | 5699130 | COMB.CHAMBER ASS.ECO4 ATM 14KW | • | | | | | | | | |
| 28 | 5213210 | INSULATING PANEL | | | | • | • | • | | | |
| 28 | 5213220 | INSULATING PANEL | • | • | • | | | | | | |
| 29 | 5213280 | INSULATING PANEL | • | • | • | • | • | • | | | |
| 30 | 5213370 | INSULATING PANEL | | | | • | • | • | | | |
| 30 | 5213380 | FRONTAL INSULATING PANEL | • | • | • | | | | | | |
| 31 | 612970 | COMB. CHAMBER FRONTAL PANEL | | | | • | • | • | | | |
| 31 | 615370 | COMBUST.CHAMBER FRONTAL PANEL | • | • | • | | | | | | |
| 32 | 5677660 | PRIMARY EXCHANGER WITH CLIPS | • | • | • | • | • | • | | | |
| 33 | 5403130 | O-RING 22 x 3 | • | • | • | • | • | • | | | |
| 34 | 5113650 | PRIMARY EXCHANGER FIXING CLIP | • | • | • | • | • | • | | | |
| 35 | 5693900 | RECT.EXPANSION VESSEL 6I-CIMM- | • | • | • | | | | | | |
| 35 | 5695230 | CIRC.EXPANS.VESSEL 6I ZILMET | | | | • | • | • | | | |
| 36 | 5698830 | PIPE EXPANSION VESSEL | • | • | • | • | • | • | | | |
| 37 | 5663830 | SEALED CHAMBER FRONT PANEL | | | | • | • | • | | | |
| 38 | 5401610 | VIEWING WINDOW GASKET | | | | • | • | • | | | |

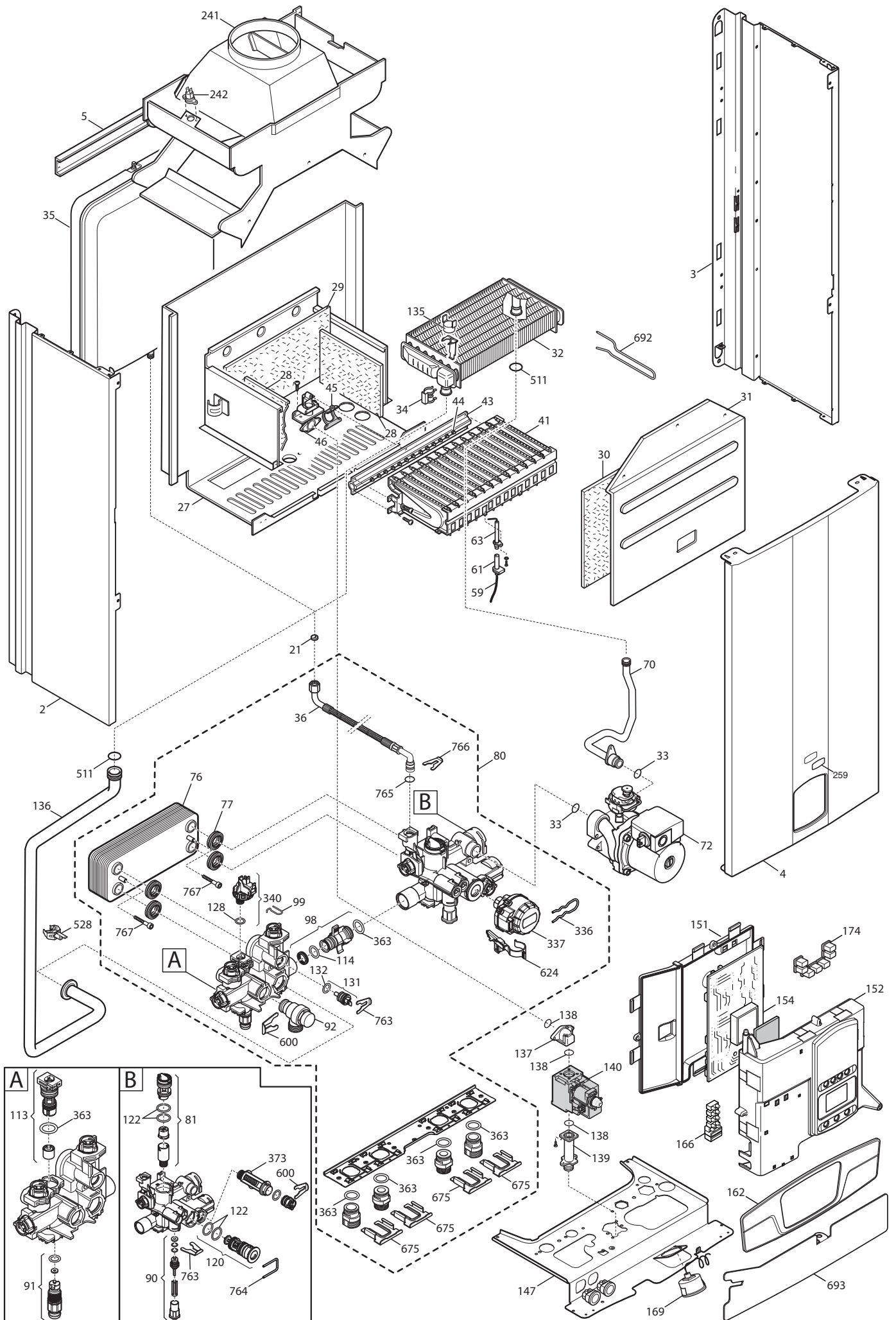
FOURTECH

| Pos | Code | Description code | CSB462343680/1 | | | | | | To serial number | From serial number | Interchangeable: | |
|-----|-----------|--------------------------------|----------------|------|----|--------|--------|------|------------------|--------------------|------------------|--|
| | | | 1.14 | 1.24 | 24 | 1.14 F | 1.24 F | 24 F | | | | |
| 39 | 5203930 | VIEWING WINDOW | | | | | • | • | • | | | |
| 40 | 5103360 | SURROUND - VIEWING WINDOW | | | | | • | • | • | | | |
| 41 | 5663710 | BURNER ASSEMBLY (13 ELEM.) | | • | • | | | • | • | | | |
| 41 | 5665980 | BURNER ASSEMBLY PERFORMA 12e | • | | | | • | | | | | |
| 43 | 5665960 | GAS RAMP 10 HOLES d.1,18 | • | | | | • | | | | | |
| 43 | 5698690 | GAS RAMP 13HOLES/INJECT. d1,18 | | • | • | | | | | | | |
| 43 | 5698700 | GAS RAMP 13HOLES/INJECT. d1,28 | | | | | | • | • | | | |
| 44 | 5666400 | NATURAL GAS INJECTORS KIT | | | | | • | • | • | | | |
| 44 | 5669460 | NATURAL GAS INJECTORS KIT | • | • | • | | | | | | | |
| 44 | 5680020 | TRANSFORMATION KIT G31 | • | • | • | • | • | • | • | | | |
| 45 | 5407940 | GASKET-BURNER MANIFOLD | • | • | • | • | • | • | • | | | |
| 46 | 5657180 | ADAPTOR-MANIFOLD | • | • | • | • | • | • | • | | | |
| 47 | 5407810 | GASKET-MANIFOLD ADAPTOR | | | | | • | • | • | | | |
| 49 | 5409520 | HOSE ADAPTER CAP | | | | | • | • | • | | | |
| 59 | 8612400 | IGNITION CABLE L=250 ECO4 | • | • | • | • | • | • | • | C023 | | |
| 59 | 710430800 | IGNITION CABLE L=250 RESIST. | • | • | • | • | • | • | • | | C024 | |
| 61 | 5407830 | INSULATION BOOT - ELECTRODE | • | • | • | • | • | • | • | | | |
| 62 | 5409570 | SEALED CHAMBER HOSE ADAPTER | | | | | • | • | • | | | |
| 63 | 8422570 | ELECTRODE - IGNITION | • | • | • | • | • | • | • | | | |
| 70 | 5698720 | PIPE PUMP/EXCHANGER ATM BITRON | • | • | • | | | | | | | |
| 70 | 5698730 | PIPE PUMP/EXCHANGER FF BITRON | | | | | • | • | • | | | |
| 72 | 5698260 | PUMP ONE SPEED 5meters WILO | • | • | • | • | • | • | • | | | |
| 75 | 5404670 | GROMMET - PIPE ASSEMBLY | | | | | • | • | • | | | |
| 76 | 5686660 | DHW PLATE EXCHANGER 10 PLATES | | | • | | | | • | | | |
| 77 | 5404520 | DHW PLATE EXCHANGER GASKET | | | • | | | | • | | | |
| 80 | 5698760 | HYDRAULIC GROUP COMBI BITRON | | | • | | | | • | | | |
| 80 | 5699200 | HYDRAULIC GROUP ONLY HEATING | • | • | | • | • | | | | | |
| 81 | 710048100 | DHW CARTRIDGE | | | • | | | | • | | | |
| 90 | 710046600 | FILLING TAP ASSY | • | • | • | • | • | • | • | | | |
| 91 | 710045500 | DISCHARGE TAP CONNECTION | • | • | • | • | • | • | • | | | |
| 92 | 710071200 | SAFETY VALVE 3 bar NOVASFER | • | • | • | • | • | • | • | | | |
| 98 | 710046300 | BY-PASS CONNECTION ASSY | • | • | • | • | • | • | • | | | |
| 99 | 710048700 | CLIP CH PRESSURE SWITCH | • | • | • | • | • | • | • | | | |
| 113 | 710048300 | BY-PASS CARTRIDGE | • | • | • | • | • | • | • | | | |
| 114 | 710046400 | O-RING d.15,54X2,62 | • | • | • | • | • | • | • | | | |
| 120 | 710144100 | 3WV CARTRIDGE | | | • | | | | • | | | |
| 122 | 710047800 | O-RING d.23,47X2,62 | | | • | | | | • | | | |
| 128 | 710048800 | O-RING d.8,9X1,9 | • | • | • | • | • | • | • | | | |
| 131 | 710056200 | NTC SENSOR HONEYWELL | | | • | | | | • | | | |
| 132 | 710049100 | O-RING d.11,91X2,62 OR115 | | | • | | | | • | | | |
| 135 | 9951610 | LIMIT THERMOSTAT 105°C | • | • | • | • | • | • | • | | | |
| 136 | 5698740 | PIPE EXCH./H.INLET ECO4 ATM | • | • | • | | | | | | | |

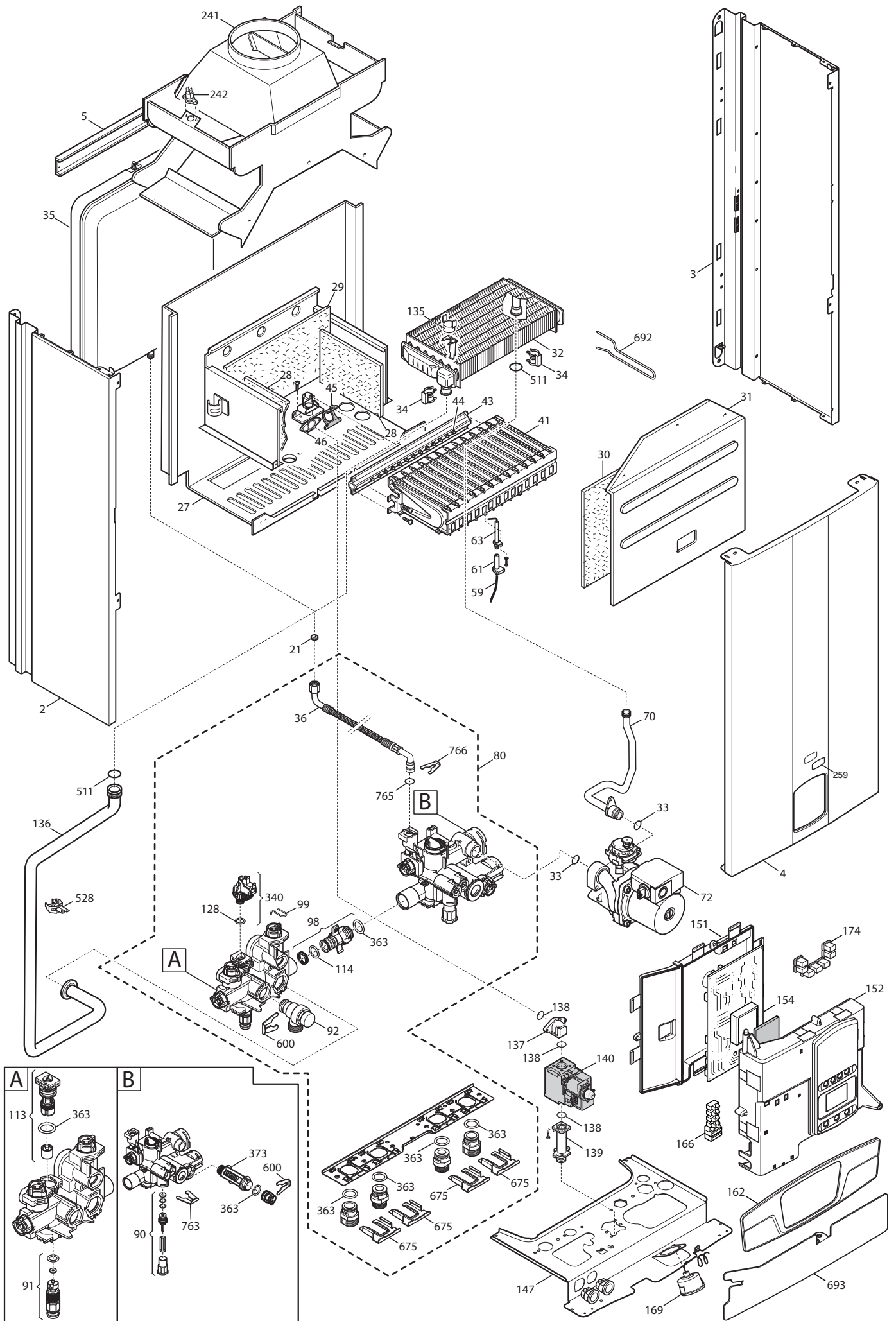
FOURTECH

| Pos | Code | Description code | CSB461143680 1.14 | CSB461243680 1.24 | CSB46243680/1 24 | CSB465143680 1.14 F | CSB465143680 1.24 F | CSB466243680/1 24 F | To serial number | From serial number | Interchan geable: |
|-----|---------|--------------------------------|----------------------|----------------------|---------------------|------------------------|------------------------|------------------------|------------------------|--------------------------|----------------------|
| 999 | 8419040 | CABLE - EARTH | • | • | • | • | • | • | | | |
| 999 | 8513650 | LOW VOLTAGE WIRING ECO4 ATM | • | • | • | | | | | | |
| 999 | 8513660 | FAN WIRING ECO4 | | | | • | • | • | | | |
| 999 | 8513670 | LOW VOLTAGE WIRING ECO4 FF | | | | • | • | • | | | |
| 999 | 8513890 | HIGH VOLTAGE WIRING ECO4 SIT | | | • | | | • | | | |
| 999 | 8513900 | HIGH VOLTAGE WIRING ECO4 HON. | | | • | | | • | | | |
| 999 | 8513910 | LOW VOLTAGE WIRING ECO4 BITRON | | | • | | | • | | | |
| 999 | 8513930 | HIGH VOLT.WIRING ECO4 SIT MON. | • | • | | • | • | | | | |
| 999 | 8513940 | HIGH VOLT.WIRING ECO4 HON. | • | • | | • | • | | | | |
| 999 | 8513950 | LOW VOLT.WIRING ECO4 MONOTHER. | • | • | | • | • | | | | |

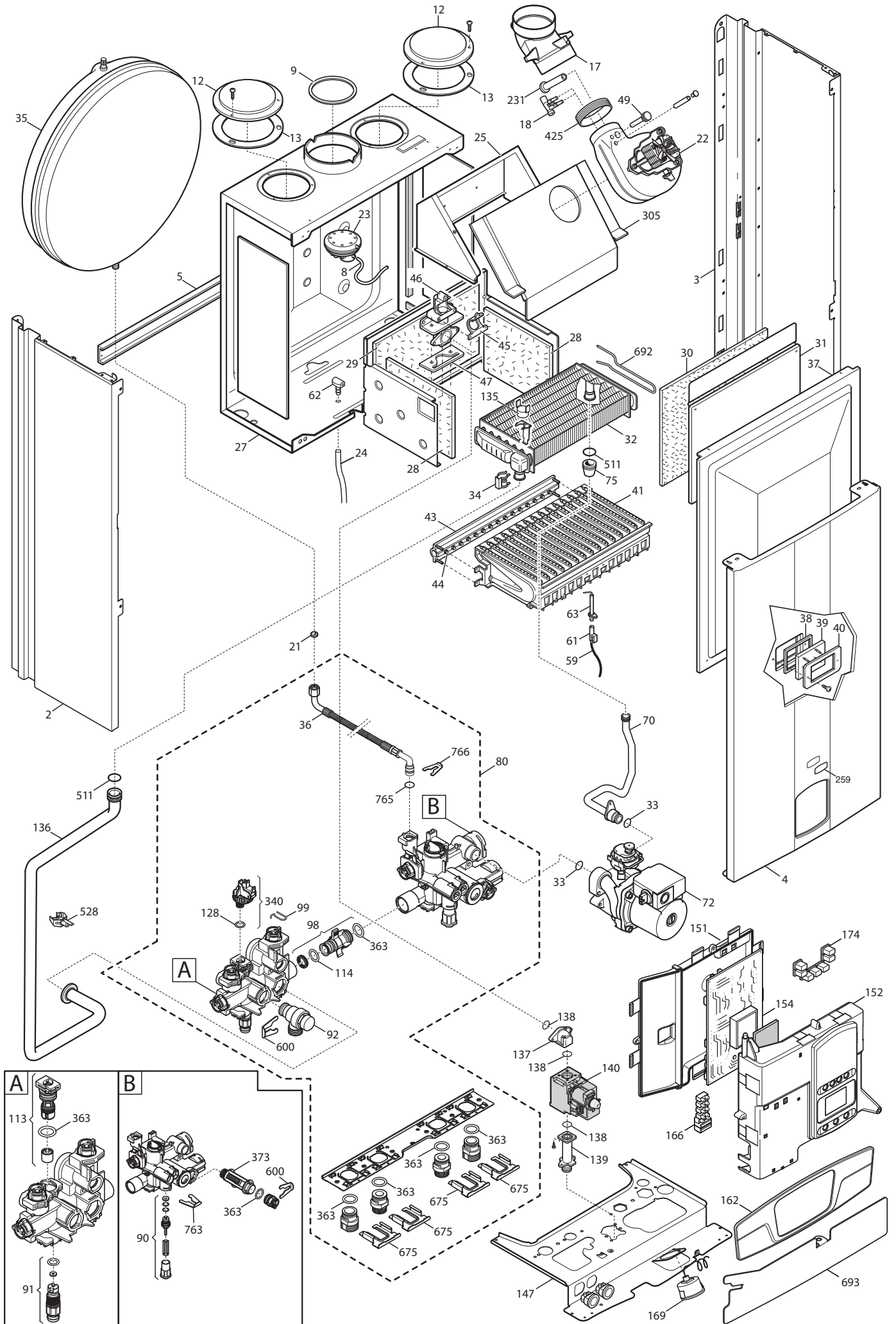
Tab 366



Tab 375



Tab 376



BAXI

BAXI S.p.A.
Via Trozzetti, 20
36061 BASSANO DEL GRAPPA (VI)
ITALY
Tel. +390424517111
Telefax +390424517379
E-mail. service@baxi.it